

LOWES-TORQUAY
PREVIEW

BOAT

SEPTEMBER 1991

£2.50 \$7.50 DM14.50

ON TEST

Nimbus • Viking
Hallberg-Rassy

Riva Special

SUPERYACHTS:

Victoria of Strathearn
Carmac VII



INTERNATIONAL

130' (40m) AMELS "PRINCESS TINA"

LOA: 130'06" (40m)
BEAM: 26'03" (7.92m)
DRAFT: 7'08" (2.36m)
YEAR: 1988
RANGE: 3,000 NM

Throughout "Princess Tina's" opulently appointed, traditional interior is finely crafted walnut joinery with burled walnut inlays and spectacular marble and granite finishes. Accommodations for eight in the owner's party in four ultra-luxurious suites. Outdoor entertainment areas rival those which are found on significantly larger vessels and include a tremendous sun deck area with large jacuzzi tub, bar, observation platform on the mast and an abundance of built-in seating and sunbathing areas plus much more. Luxuriously warm and inviting, PRINCESS TINA is without equal. WORLDWIDE CENTRAL AGENTS.



WOOD & ASSOCIATES

Yacht Consultants and Marketing
1535 S.E. 17th Street, Suite 201B
Ft. Lauderdale, Florida 33316
(305) 525-5111 - FAX: (305) 525-5165



COLOMBAIO STAR

■ One of the largest sailing charter vessels to be built in recent years was launched from the Frisian port of Harlingen recently for a Swiss owner. The 38.5m (127ft) ketch-rigged *Colombaio Star*, designed by Diana Yacht Design, has fully automated sails on two masts, 37m and 27m respectively.

Accommodation is for 12 in six cabins. After a trial run to Spitsbergen the vessel will cruise the Baltic, Mediter-

ranean and Caribbean.

Colombaio Star, with steel hull and aluminium superstructure, was completed in only 10 months at a very competitive cost of \$3 million. Her builders, Scheepswerf Friesland, are due to launch her sistership, the *Colombaio Sun*, in November.

Contact: Scheepswerf Friesland, Sluisweg 13-16, 8531 DJ Lemmer, The Netherlands. Tel: +31 (0)5146 2125. Fax: +31 (0)5146 2165.



DESTINY. Length 173'. Beam 29'10". Draft 10'. Built 1988. Accommodation for 14 guests in two master suites and 5 double cabins.

67.75m Archimedes

■ The 67.75m *Archimedes* has been launched from Feadship's Royal Van Lent yard. She features naval architecture by De Voogt, with exterior styling and interior design by John Munford. A beam of 12.3m means she has impressive internal volume, and she is said to feature a genuine working fireplace as specified by her American owner at the original design stage. Twin Cat diesels, producing a total of around 4,000hp, should give her a top speed of 16 knots.

contact: Feadship, The Netherlands **tel:** +31 (0)23 524 70 00 **e-mail:** info@feadship.nl **web:** www.feadship.nl



45m My Trust

■ Hakvoort's latest launch is the first yacht to meet Holland's new Commercial Cruising Vessels (CCV) guidelines, as well as Lloyds and MCA codes. Diana Yacht Design drew her lines, her exterior styling is by Cor de Rover, and she features a Felix Buytendijk interior.

contact: Hakvoort Shipyard, The Netherlands **tel:** +31 (0)29 965 1403
e-mail: sales@hakvoort.com **web:** www.hakvoort.com



57m Romance

■ CRN's 57m *Romance* marries an opulent, Baroque-style interior, featuring onyx, silk and gold, with sleek external lines. Among her more unusual features are a wood stove, 6m swimming pool, and a Turkish bath. She should cruise at 15 knots.

contact: CRN SpA, Italy **tel:** +39 (0)71 501 1111
e-mail: info@crn-yacht.com **web:** www.crn-yacht.com

PERIN DE WAARD/YACHT-PICTURES.COM

CHRISTO380/YACHT-PICTURES.COM



HOKULANI

Amels expedition yacht *Elanymor*. Originally a North Sea pilot vessel, she was converted by Vosper Thornycroft in 1999.

Simon Ting of **Blue Water Yachting** acted for the buyer in the *Elanymor* transaction, and the company is also promoting the sale of yacht BC 121, which is in build at the Benetti yard for delivery in May 2009 and is asking €13.75 million. On the charter front, Bloemsa & Van Breemen's 48m *Flying Eagle* is now actively seeking charter bookings, with prime dates still available for the remaining season in the western Mediterranean. Sleeping 10 guests in five cabins, with a crew of eight, she is available at €250,000 per week plus expenses. Meanwhile, the 36m Benetti Classic *Wild Thyme* is looking for post-summer charters from Gibraltar from mid-September, when the crowds have dispersed and the temperatures are still high enough to enjoy outdoor living. Accommodating 10 guests in five en suite cabins, her rates start at €105,000 per week.

Merle Wood & Associates reports the sale of Delta Marine's 37.8m *Scott Free*. Built in 1996, she was refitted in 2006 and has now been renamed *Seven C's*. Joining the sales listings is Trident's 38.4m *Savoy*, while the charter fleet has two new entrants: Hakvoort's 50m *JeMaSa* and the 52.4m support vessel *Suri*.

Kevin Bonnie at **International Yacht Collection** has had a successful two months, selling two new-construction projects. The first is a 56m

Perini Navi to be called *Cadre Noir*, with an interior designed by Perini and ProDesign, while the second is a 50m aluminium tri-deck motor yacht from Trinity Yachts, due to be launched in 2011. Her exterior will be styled by Luiz de Basto, who will also work with ProDesign on the interior. On the brokerage side, Bob McKeage's central-agency listing *Bravebeart* – a 49.4m Swedeship built in 1989 – has been sold, while new to the division is Thom Conboy. Previously of Heesen Yachts, he has more than 28 years of experience in the custom yacht industry and will specialise in existing and new construction projects.

Three yachts have joined IYC's charter fleet: *Hokulani*, *Cbarisma* and *Pure Bliss*. *Hokulani* is a 45.7m Palmer Johnson motor yacht built in 2007. Sleeping 10 guests in five cabins, she is available in the western Mediterranean this summer and next winter at rates starting from €175,000 per week in summer and €160,000 per week in winter. The 39.7m *Charisma* was built by Hatteras in 1995 and was extensively refitted in 2007. Sleeping 10 guests, she is available in the Bahamas this summer at \$88,000 per week and in the Caribbean in winter 2008/2009 at \$92,000 per week. *Pure Bliss* is a 43.3m Palmer Johnson built in 1997, and sleeps 10



JEMASA

CONTACTS

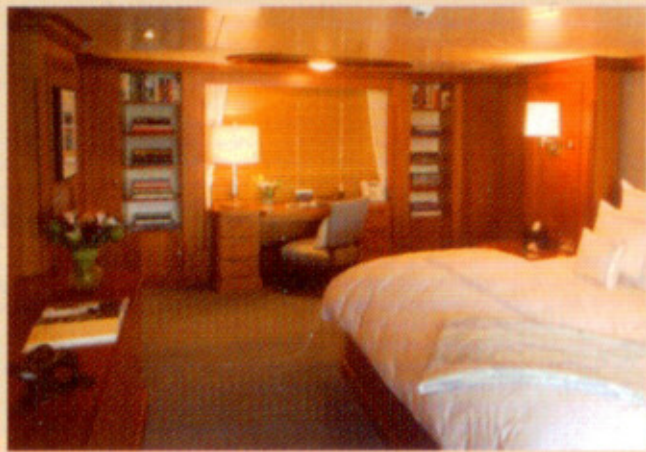
INTERNATIONAL YACHT
COLLECTION (USA)
Tel: +1 954 522 2323
E-mail: info@iyc.com

PETER INSULL'S YACHT MARKETING
(France)
Tel: +33 493 34 44 55
E-mail: yacht@insull.com

THE SACKS GROUP (USA)
Tel: +1 954 764 7742
E-mail: info@sacksyachts.com

DUBOIS YACHTS (UK)
Tel: +44 (0)1590 626688
E-mail: yachts@dubois-yachts.com

CENTRAL AGENT



164' HAKVOORT 2006 "JEMASA"*